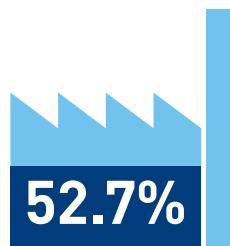


B&C Industrieholding

Value creation 2016

B&C core investments¹



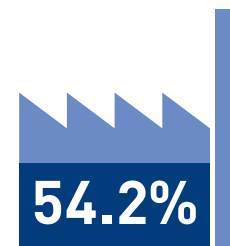
AMAG
AUSTRIA METALL

Producer and processor
of aluminium products



LENZING

Producer
of cellulose fibers

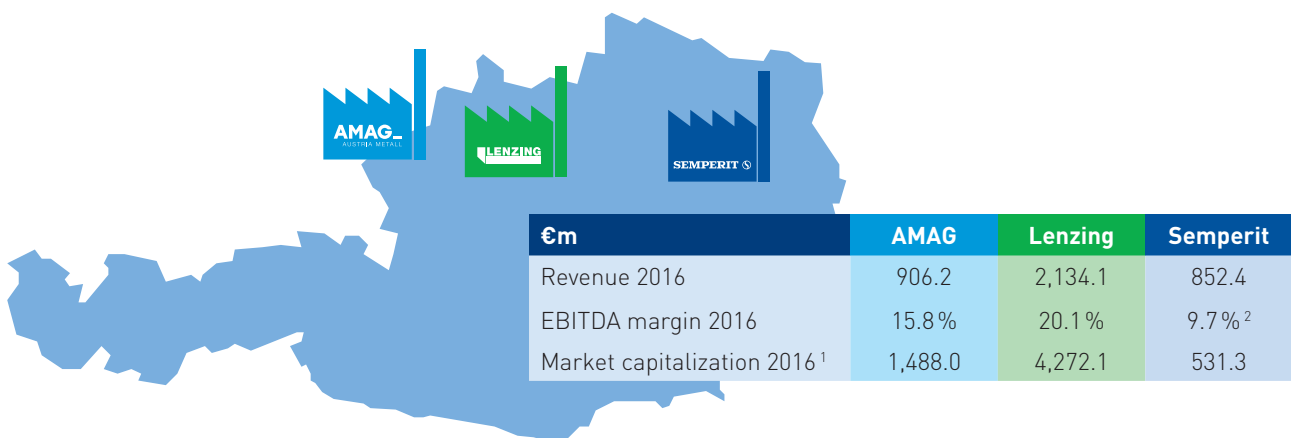


SEMPERIT Ⓢ

Producer
of rubber products
for various applications

¹ Shareholding in percent as at 05/2017

Key figures of core investments



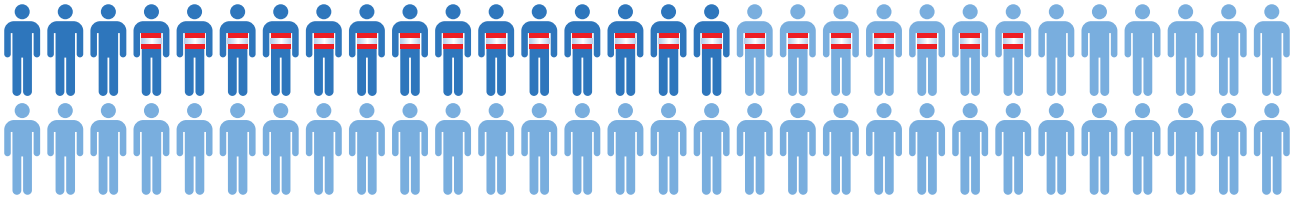
¹ Based on three-months weighted average share price as at 23/05/2017 · ² Adjusted for special effects

Contributions of B&C Industrieholding with its three core investments to Austria as a business location

B&C's core investments are considerable job creators

EMPLOYEES 2016 (average)

Total: **14,909** Thereof in Austria: **5,213**



White-collar employees (total)
4,136

Blue-collar employees (total)
10,773

Women (total)
2,389 = 16%

Apprentices (in Austria)
264 = 5%¹

TOTAL WAGES AND SALARIES²:

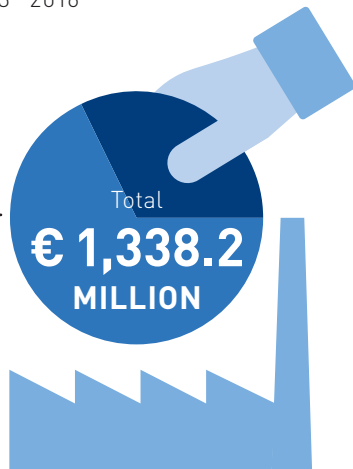
€ 407.8 MILLION

1) Relative to employees in Austria · 2) Total costs of employee remuneration including employer's social security contributions and contributions to employee benefit funds

B&C's core investments are major investors

INVESTMENTS 2013 - 2016

In Austria
€ 910.0 MILLION



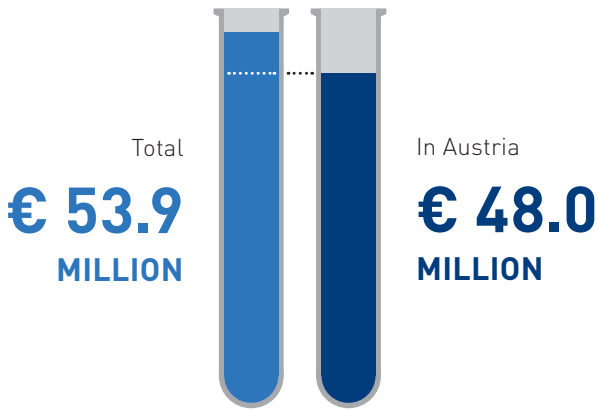
B&C's core investments generate substantial tax revenue

TAXES AND DUTIES PAID IN AUSTRIA 2016



B&C's core investments drive research forward

INVESTMENTS IN RESEARCH AND DEVELOPMENT 2016



B&C's core investments are major customers of Austrian businesses



5,319 suppliers with a total of 31,914 employees¹ depend indirectly on B&C's core investments.

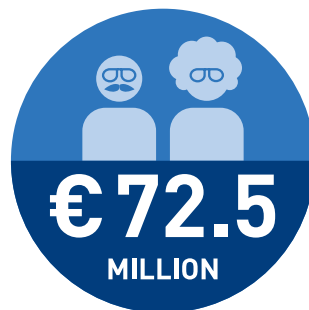
¹Based on the average number of employees (6) at small and medium-sized enterprises in Austria. Source: www.kmuforschung.ac.at

B&C's core investments make a significant contribution to social security in Austria

PAYMENTS FOR HEALTH AND PENSION BENEFITS AND OTHER SOCIAL SECURITY CONTRIBUTIONS IN AUSTRIA 2016



TOTAL HEALTH COVERAGE CONTRIBUTIONS¹



TOTAL PENSION COVERAGE CONTRIBUTIONS¹

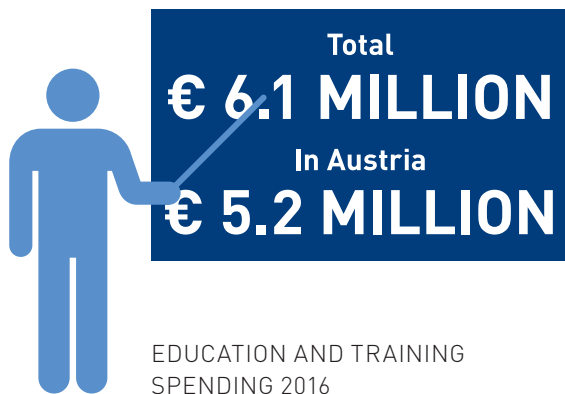


OTHER SOCIAL SECURITY CONTRIBUTIONS²

¹Includes company/voluntary payments as well as statutory payments

²Includes employer's contribution to family compensation fund, supplementary payments to family compensation fund and other payments

B&C's core investments are committed to education and training for their employees



B&C's core investments pay dividends to their shareholders

DIVIDENDS PAID OUT 2013-2016

Proportion
of Austrian investors

76%²

Corresponding to
€ 437.4 MILLION



1) Total dividends paid out to all shareholders

2) Source: Annual reports, Thomson One